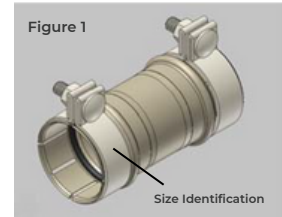


Couplings are shipped in ready-to-use condition and should not be disassembled.

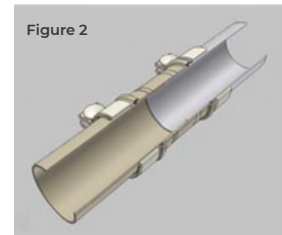
PREPARING FOR INSTALLATION

- Verify OD dimension marked on each clamp with the size of tube you intend to join. **(Figure 1)**
- Coupling has been factory-sized for proper fit and inspected before shipping.
- Clean outside of tube to make it free of dirt and grease which can cause coupling slippage.
- Make sure tube is free of jagged ends and burrs, which could cause material blockages.
- Make sure outside surface of tube is dry.



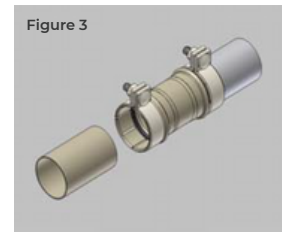
ASSEMBLING TUBE AND COUPLING

- Slide coupling over one tube until end of that tube is at the center of the coupling. **(Figure 2)**
- Tighten the clamp on the end of the coupling which the tube is inserted.
- Insert the other end of the tube that you intend to join. Butt the tube ends together and tighten the clamp at the end of the coupling. **(Figure 3)**



TIGHTENING THE COUPLING

- Tighten the bolts to torque shown in chart below. Bolts should not be overtightened. **(Figure 4)**
- The assembly is completed when the coupling clamps are tightened to the recommended torque.



Bolt Size	Ft. Lbs. Torque
7/16	50



Please contact **H-P Products** should you have any questions about the installation process at **(330)-875-5556** (8a-5p EST) or **tubularcatalogproducts@h-pproducts.com**.